



WESTWOODLEBER

WESTWOODLEBER
LET US GUIDE YOU HOME

Burford Street, Hoddesdon, EN11 8JL
£395,000



Burford Street, Hoddesdon, EN11 8JL

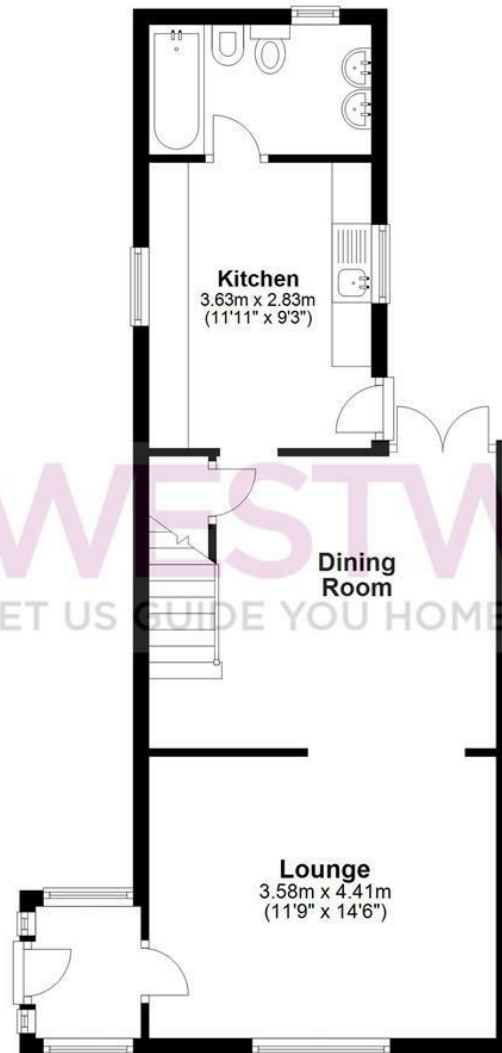
**** GARAGE TO THE REAR WITH OFF-STREET PARKING **** Westwood Leber are delighted to bring to the market this period cottage set 5 minutes from Hoddesdon Town centre and a 15-minute walk to Rye House Station, this property boasts 3 bedrooms and two bathrooms. Downstairs you'll find a good-sized open plan living space and galley kitchen, with an outdoor courtyard. The garage at the rear of the property has plenty of space for storage or repurposing into a home office or gym. The front of the property is lined with a low-maintenance garden that grants privacy to the kitchen and back of the property.



WESTWOODLEBER

Ground Floor

Approx. 50.5 sq. metres (543.3 sq. feet)



First Floor

Approx. 43.1 sq. metres (463.6 sq. feet)



Total area: approx. 93.5 sq. metres (1006.9 sq. feet)

FOR ILLUSTRATIVE PURPOSES ONLY. NOT TO SCALE. Whilst every attempt had been made to ensure the accuracy of the floor plan shown, all measurements, positioning, fixtures, features, fittings and any other data shown are an approximate interpretation for illustrative purposes only and are not to scale. No responsibility is taken for any error, omission, miss-statement or use of data shown. Property marketing provided by Westwood Leber.
Plan produced using PlanUp.





